

# Monthly Market Intelligence Visitor Industry

June 22 2010

## Explanation:

This information is compiled so that you can compare your business activity against national statistics, plan for the future, and keep up-to-date with our competitors.

It is broken into three categories:

**Latest Statistics:** To assist you to analyse your businesses performance against national results.

**Next month in History:** To help with forward planning.

**Our Competitors:** To give you an idea of what our competitors are up to. In this information we have selected Hawke's Bay, Auckland and Nelson as regional competitors'.

## Latest Stats (April 10)

### Commercial Accommodation

#### Monthly highlights

In April 2010 compared with April 2009:

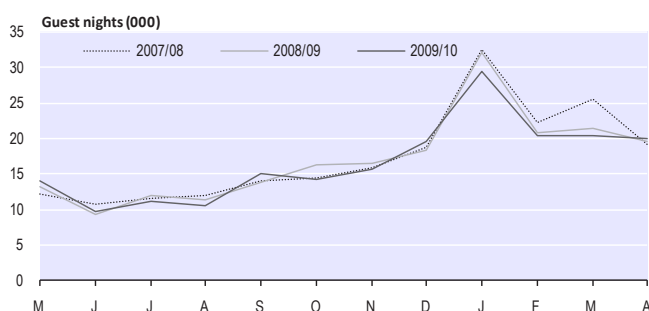
- Guest nights up 2.3 percent to 19,942
- International guest nights up 6.2 percent to 2,926
- Domestic guest nights up 1.6 percent to 17,016
- Average length of stay rose from 1.82 nights to 1.92 nights
- Overall occupancy rate rose from 23.7 percent to 23.8 percent
- The occupancy rate, excluding holiday parks, was 41.4 percent in April 2010.
- Accommodation capacity, excluding holiday parks, up 12.1 percent.

#### Response rates for April 2010

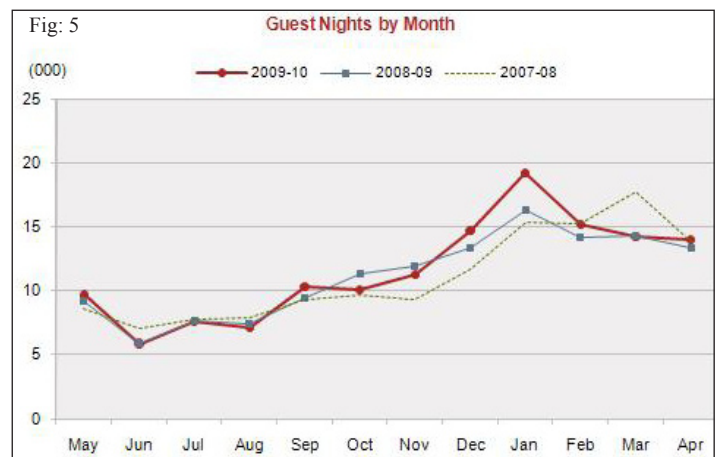
- The response rate for the Kapiti-Horowhenua RTO area was 80 percent for April 2010.
- The proportion of the origin-of-guest estimate from actual data was 80 percent.

Figure 1.1

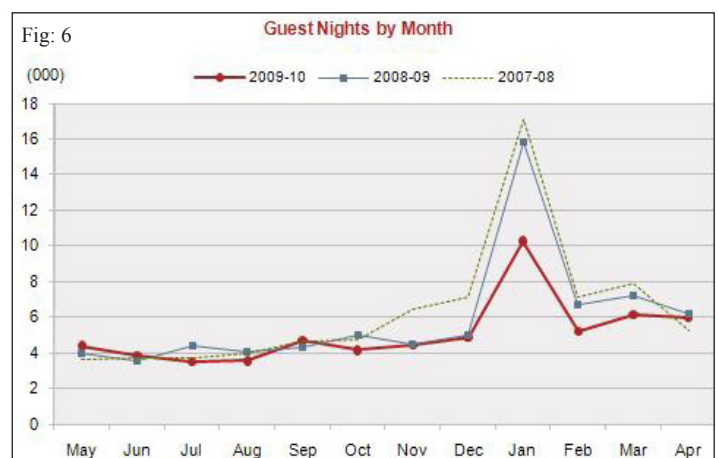
**Kapiti-Horowhenua RTO Area Monthly Guest Nights**



### Kapiti Coast Guest Nights



### Horowhenua Guest Nights



**Fig 5 and 6: Guest Nights** - The Commercial Accommodation Monitor (CAM) provides regional data on the supply and demand of the accommodation sector.

**Survey Type.** The CAM is a census (rather than a sample survey) of all mainstream commercial accommodation establishments of certain size. Participation is compulsory as it is collected under the Statistics Act 1975.

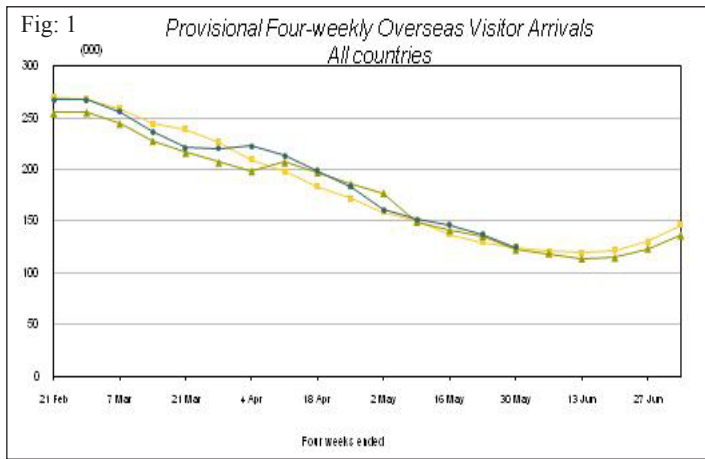
**Survey Coverage.** Survey forms are sent out monthly by Statistics New Zealand to accommodation establishments (around 4,000 in March 2008) chosen from Statistics New Zealand's Business Frame (BF). These establishments must be registered for GST and have a turnover of at least NZ\$30,000 per annum. Therefore, those small establishments that are not GST registered or earn below the threshold level are not included in the survey. A large proportion of these are hosted/B&Bs. Some establishments may also be overlooked by the Business Frame if they are involved in the accommodation industry as a secondary commercial activity, for example, farm-stay tourist accommodation within the main farm business. Consequently there is under coverage of small accommodation providers.

Guest Nights are defined as being equivalent to one guest spending one night at an establishment. For example, a motel with 15 guests staying two nights would report the provision of 30 guest nights of accommodation.



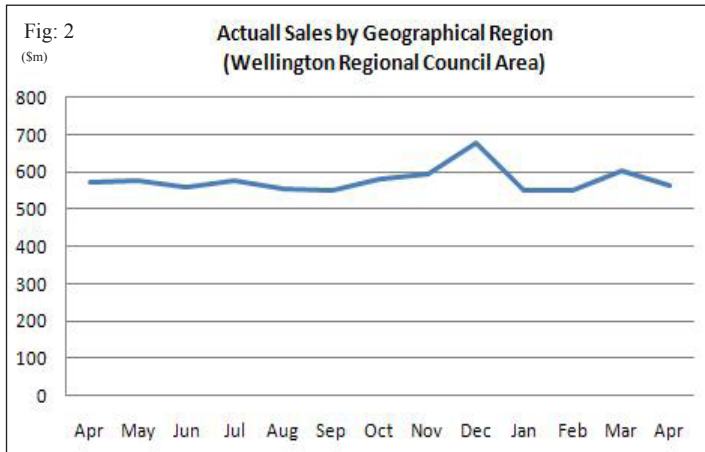
**Fig 1: International visitor arrivals**

Statistics New Zealand produces the four-weekly time series in an attempt to gain an early indication of the possible change in monthly visitor numbers compared with the previous year. The time series compares the most recent data with data for 'equivalent' four-weekly periods for the past two years. All data for the latest month are provisional.



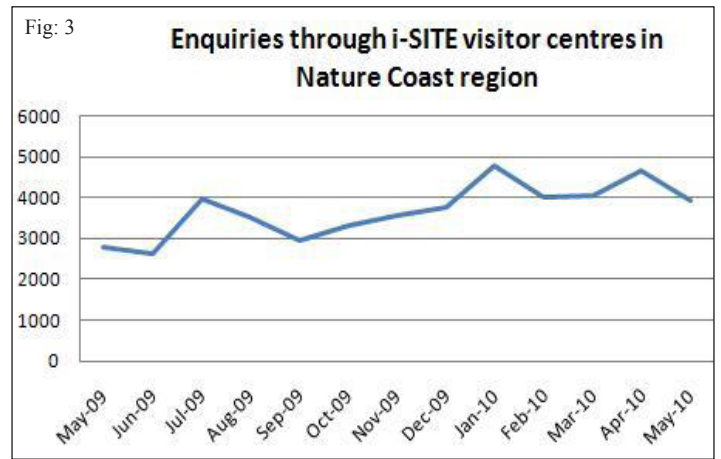
**Fig 2: Actual retail sales by region**

The Retail Trade Survey (RTS) is designed to provide short-term economic indicators of the retail trade sector.



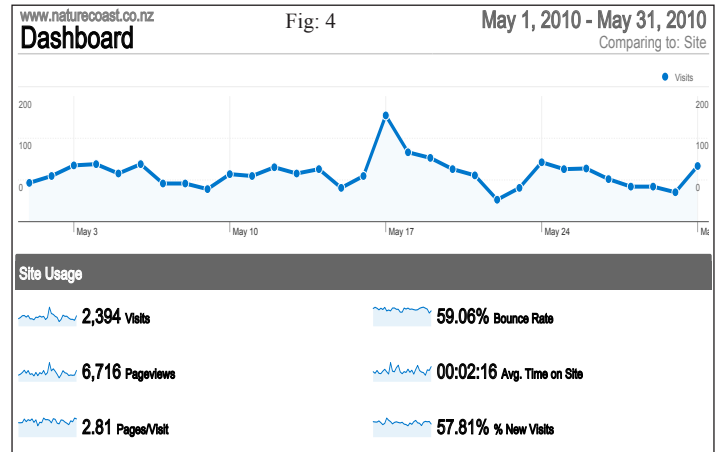
**Fig 3: Total number of people visiting the Nature Coast visitor centres**

Staff at the Nature Coast Enterprise managed visitor centres in Otaki, Levin and Paraparaumu note the number of visitors to the centres each day. This monthly total includes visitors to all three centres.



**Fig 4. Web site stats**

This information relates to [www.naturecoast.co.nz](http://www.naturecoast.co.nz). Most of the information is self-explanatory, however the Bounce Rate essentially represents the average percentage of initial visitors to a site who "bounce" away to a different site, rather than continue on to other pages within the same site. The formula used to calculate bounce rate is:  $\text{Bounce Rate} = \text{Single Page Access} / \text{Entries}$ .

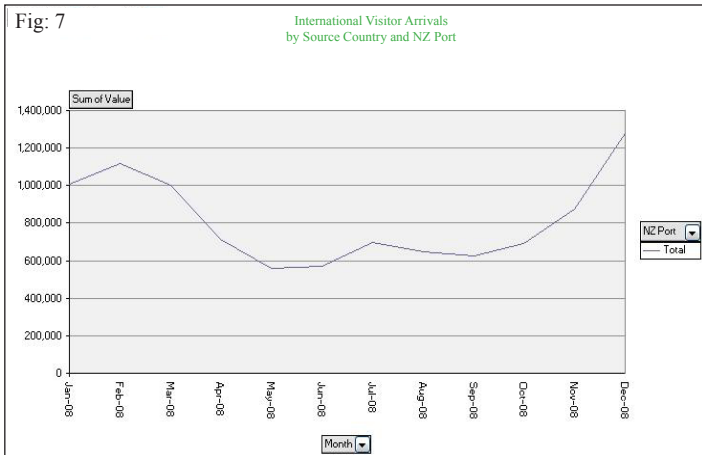




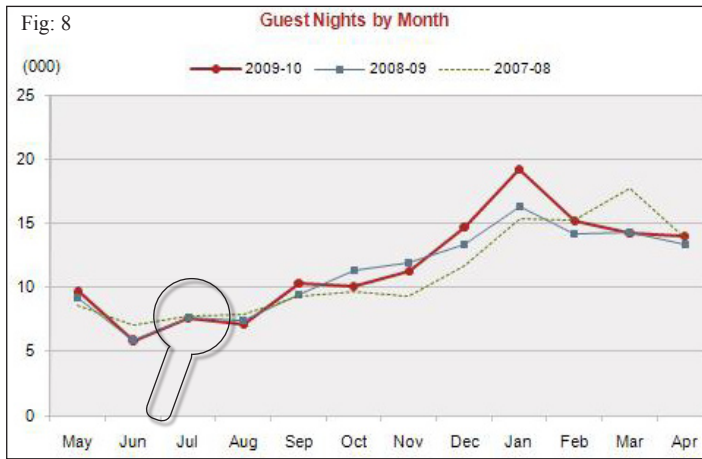
## Next Month in History (July 09)

**Figures 7 to 9** represents historical data to give you an indication of what trends are likely to affect your business in the months to come.

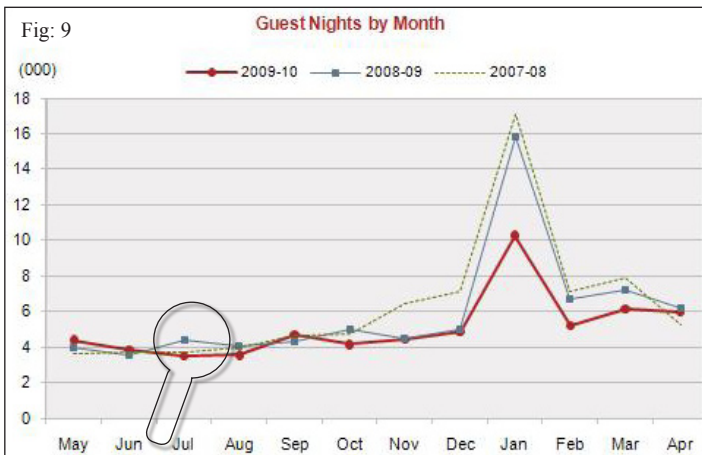
### Visitor Arrivals



### Kapiti Coast Guest Nights



### Horowhenua Guest Nights



## Our Competitors



**Nelson** its nelson

Event Search Visit Nelson Event Organisers Volunteers Contact Us

Quick Search for Events 22/06/2010 TO GO

Event Highlights Your guide to events in Nelson, New Zealand

- WASA Wild and Sneaky Art Festival 2010
- Nelson Cycle Fest
- Nelson Growables Garden Fair
- PHAT 11

Sign-up for the latest event updates

**Auckland**

Great Auckland Adventures

Things to do Accommodation View Adventures

Home About Auckland Things to Do RWC 2011 Events Accommodation Transport Multimedia Study Auckland Convention Bureau

Auckland, New Zealand

Search Auckland

Hiere mai, welcome to the official website for Auckland, New Zealand's biggest city. Wherever you stay in Auckland, you're never far from breathtaking scenery, beautiful beaches, invigorating walks, idyllic holiday islands, outstanding food and wine, great shopping and exciting nightlife.

Tourism Auckland

Auckland Weather Today, Tue 22 June 2010 12°C Extended Forecast

Search and Book Accommodation

**Hawkes Bay** LIVE & WORK

VISIT HAWKES BAY WINE COUNTRY NEW ZEALAND

Contact Us Site Map Trade Media Advertis

Tuesday 22nd June 2010 LOCAL TIME: 9:34a.m. Hastings

I want to... Search this site... Please select... Search Site...

Visitor Information Rugby World Cup 2011 About Hawkes Bay Hot Deals Accommodation Sights & Activities Wine & Food Event Calendar Image Gallery Conferences & Meetings

Visitor Information

ACCOMMODATION SIGHTS & ACTIVITIES WEDDINGS CONFERENCES & MEETINGS WINE & FOOD EVENT CALENDAR

You are here: Home > Visit > Hot Deals

HOT DEALS

1-10 of 29 results

Craggy Range Winter Break Craggy Range Cottage Retreats

WE THINK YOU DESERVE A WINTER BREAK...