

Monthly Market Intelligence

Visitor Industry

May 3 2011

Explanation:

This information is compiled so that you can compare your business activity against national statistics, plan for the future, and keep up-to-date with our competitors.

It is broken into three categories:

Latest Statistics: To assist you to analyse your businesses performance against national results.

Next month in History: To help with forward planning.

Our Competitors: To give you an idea of what our competitors are up to. In this information we have selected Hawke's Bay, Auckland and Nelson as regional competitors'.

Latest Stats (February 11)

Commercial Accommodation

Monthly highlights

In February 2011 compared with February 2010:

- Guest nights down 0.1 percent to 20,321
- International guest nights down 7.5 percent to 3,902
- Domestic guest nights up 1.8 percent to 16,420
- Average length of stay fell from 1.77 nights to 1.70 nights
- Overall occupancy rate fell from 24.7 percent to 24.6 percent
- The occupancy rate, excluding holiday parks, was 40.4 percent in February 2011.
- Accommodation capacity, excluding holiday parks, down 2.2 percent.

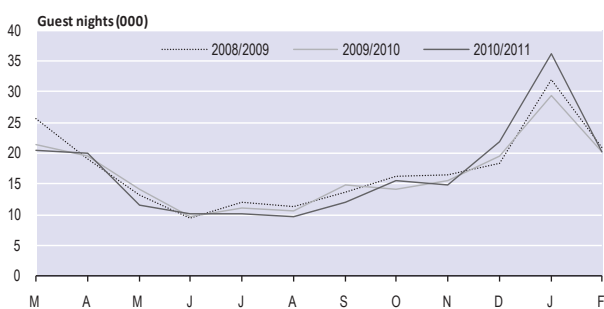
Response rates for February 2011

The response rate for the Kapiti-Horowhenua RTO area was 85 percent for February 2011.

The proportion of the origin-of-guest estimate from actual data was 85 percent.

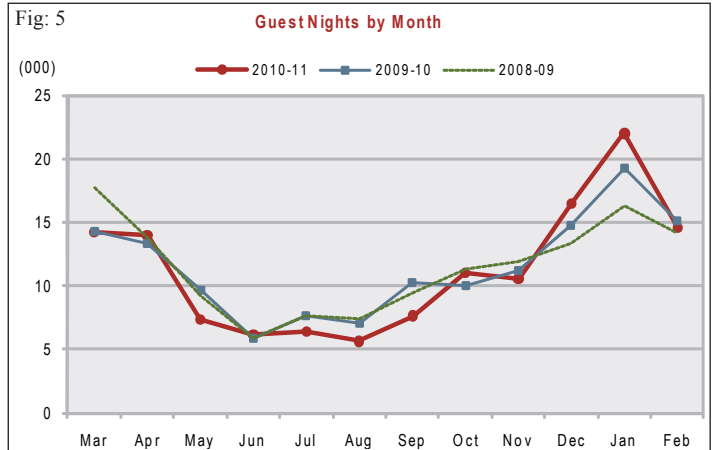
Figure 1.1

Kapiti-Horowhenua RTO Area Monthly Guest Nights



Kapiti Coast Guest Nights

Fig: 5



Horowhenua Guest Nights

Fig: 6

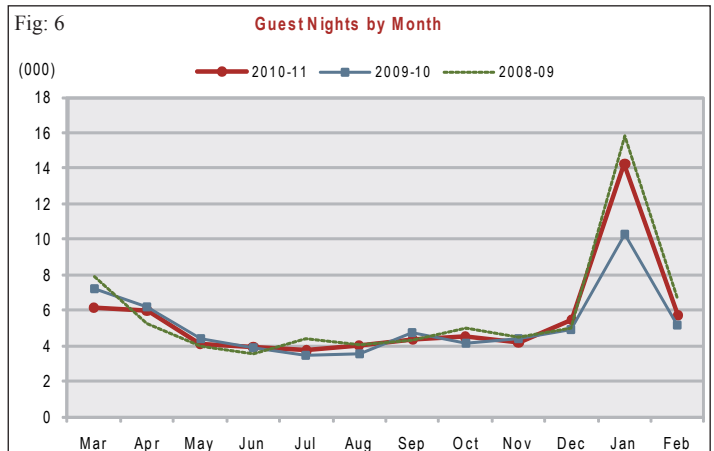


Fig 5 and 6: Guest Nights – The Commercial Accommodation Monitor (CAM) provides regional data on the supply and demand of the accommodation sector.

Survey Type. The CAM is a census (rather than a sample survey) of all mainstream commercial accommodation establishments of certain size. Participation is compulsory as it is collected under the Statistics Act 1975.

Survey Coverage. Survey forms are sent out monthly by Statistics New Zealand to accommodation establishments (around 4,000 in March 2008) chosen from Statistics New Zealand's Business Frame (BF). These establishments must be registered for GST and have a turnover of at least NZ\$30,000 per annum. Therefore, those small establishments that are not GST registered or earn below the threshold level are not included in the survey. A large proportion of these are hosted/B&Bs. Some establishments may also be overlooked by the Business Frame if they are involved in the accommodation industry as a secondary commercial activity, for example, farm-stay tourist accommodation within the main farm business. Consequently there is under coverage of small accommodation providers.

Guest Nights are defined as being equivalent to one guest spending one night at an establishment. For example, a motel with 15 guests staying two nights would report the provision of 30 guest nights of accommodation.



Fig 1: International visitor arrivals

Statistics New Zealand produces the four-weekly time series in an attempt to gain an early indication of the possible change in monthly visitor numbers compared with the previous year. The time series compares the most recent data with data for 'equivalent' four-weekly periods for the past two years. All data for the latest month are provisional.

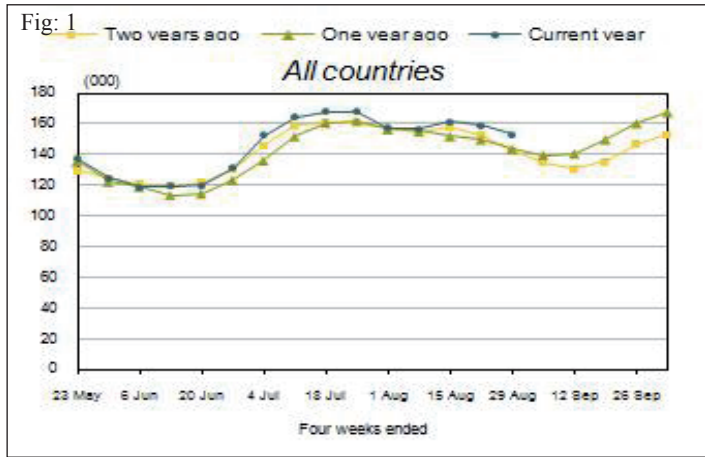


Fig 3: Total number of people visiting the Nature Coast visitor centres

Staff at the Nature Coast Enterprise managed visitor centres in Otaki, Levin and Paraparaumu note the number of visitors to the centres each day. This monthly total includes visitors to all three centres.

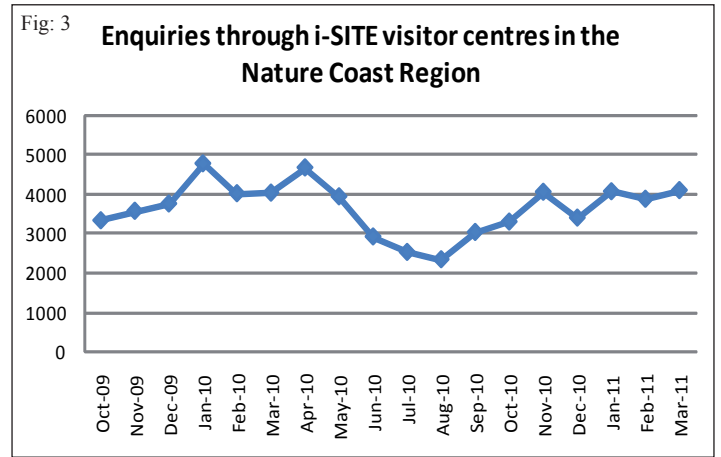


Fig 2: Actual retail sales by region

The Retail Trade Survey (RTS) is designed to provide short-term economic indicators of the retail trade sector.

Retails Sales data is now released quarterly, the next release date is 13 May

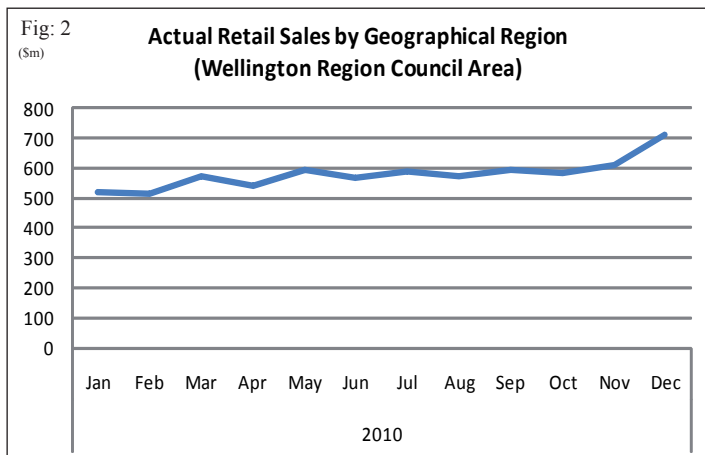
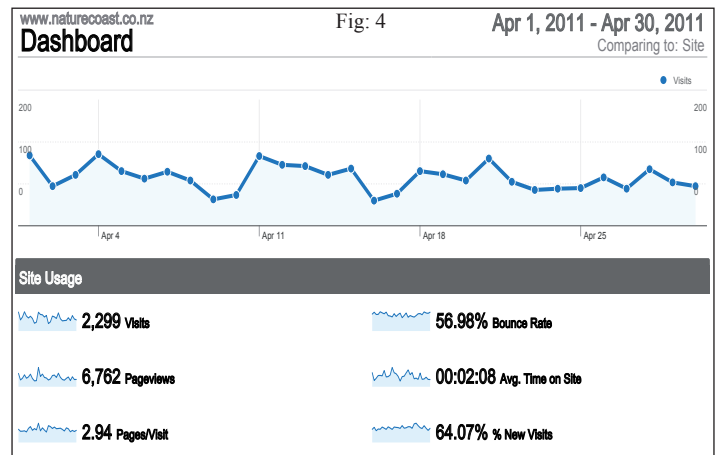


Fig 4. Web site stats

This information relates to www.naturecoast.co.nz. Most of the information is self-explanatory, however the Bounce Rate essentially represents the average percentage of initial visitors to a site who "bounce" away to a different site, rather than continue on to other pages within the same site. The formula used to calculate bounce rate is:

$$\text{Bounce Rate} = \frac{\text{Single Page Access}}{\text{Entries}}$$

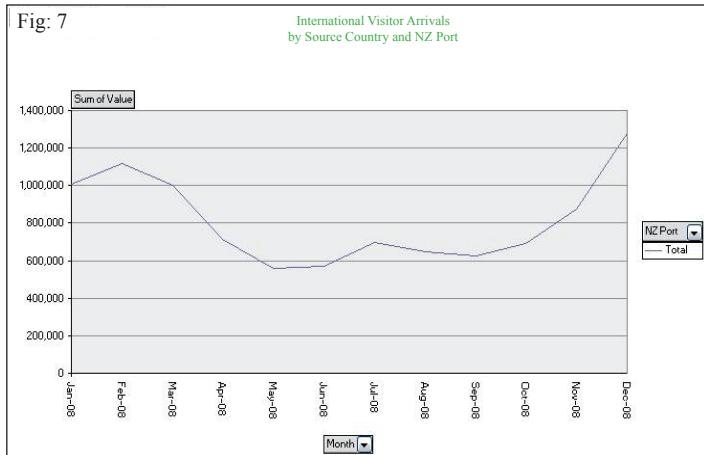




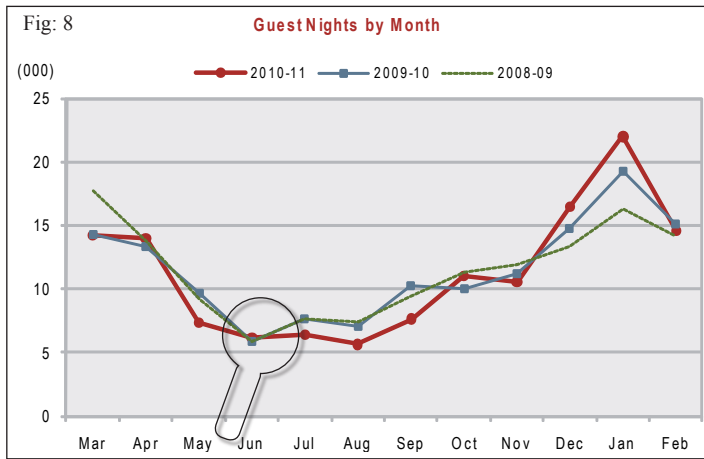
Next Month in History (June 10)

Figures 7 to 9 represents historical data to give you an indication of what trends are likely to affect your business in the months to come.

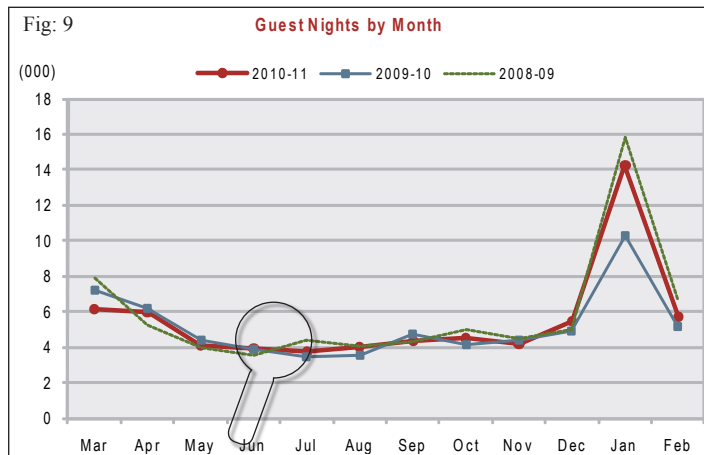
Visitor Arrivals



Kapiti Coast Guest Nights



Horowhenua Guest Nights



Our Competitors



Nelson it's nelson

Event Search Visit Nelson Event Organisers About Us Contact Us

Quick Search for Events: 28/04/2011 TO [] GO

Search by Event Type or Location

Event Highlights: Your guide to events in Nelson, New Zealand

- Peter Pan: Monday 25th - Saturday 30th April 2011
- 'It's Just an Illusion' Magic Show: Tuesday 26th - Friday 29th April 2011
- Summit Rescue Helicopter Base Open Day: Sunday 1st May 2011
- Chicago: Monday 2nd - Sunday 8th May 2011

View all Events

Auckland

Home About Auckland Destinations Things to Do Dining Events RWC 2011 Accommodation Transport Studying Conventions

Auckland, New Zealand

Haere mai, welcome to the official visitor information site for Auckland, New Zealand's biggest city. Wherever you stay in Auckland, you're never far from breathtaking scenery, beautiful beaches, invigorating walks, idyllic holiday islands, outstanding food and wine, great shopping and exciting nightlife.

Search Auckland [] Search

Auckland NZ on Facebook: 21,471 likes

Available on the iPhone App Store

Search and Book Accommodation: All Types [] dslm/lyyyy [] 1 Night [] Search

School Holidays 50 Must dos in Auckland

Hawkes Bay

CONTACT US Site Map Trade Media Advertisers

Thursday 28th April 2011, LOCAL TIME: 9:30a.m.

I want to... Search this site... Please select... Search Site...

Rugby World Cup 2011 Cycling in Hawke's Bay About Hawke's Bay Hot Deals Accommodation Sights & Activities Wine & Food Event Calendar Image Gallery Conferences & Meetings

It's still Summer here!

This image is a deal and extend your Summer in sunny Hawke's Bay! \$99 WEEKENDS

ACCOMMODATION SIGHTS & ACTIVITIES WEDDINGS CONFERENCES & MEETINGS WINE & FOOD EVENT CALENDAR

You are here: Home > Visit

HOT DEALS

1-10 of 76 results

\$249 Warm Winter Getaway: Havelock House

Enjoy a warm winter getaway at Havelock House. The Havelock Suite features a log fire in...

It's still Summer here!